

SteamCraft® Ultra 10

TWO COMPARTMENT FLOOR MODEL DESIGN
PRESSURELESS CONVECTION STEAMER
GAS STEAM GENERATORS, 125M BTU

MODEL: 24-CGA-10

Cleveland Standard Features

- Cooking Capacity for up to ten 12" x 20" x 2½" deep Cafeteria Pans, five each compartment.
- **Innovative PowerPak Gas Steam Generator:** Unique 125,000 BTU, 80% efficient Vertical Atmospheric Generator Design, only uses 75M BTU when one compartment is used. Strong 14 Gauge Stainless Steel Construction. Large 7.5 gallon generator reservoir for high speed cooking production. Fully insulated rear mounted steam generator.
- **Easy Access Cleaning Port:** Generator Cleaning Port located on the outside, top of the unit.
- **Generator Cleaning Light:** Indicator Light located on the front of the unit warns operator it is time to delime generator.
- **Instant Steam Stand By Mode:** Hold generator at a steaming temperature. Allows unit to start cooking instantly.
- **Durable 14 Gauge, 304 Stainless Steel Construction:** For compartment door, cavity and steam generator.
- **Two 60 Minute Electro-Mechanical Timers and Switches for manual operation:** Audible signal for cooking time completion. (MCS)
- **Main Power On/Off Switch:** Automatically fills generator with water, then ignites gas burners via a fully automatic Electronic Spark Ignition (pilotless) to start generator.
- **Exclusive Steam Cooking Distribution System:** Exclusive Brass Steam Jets produce a high velocity convection steam without fans. Coved Corner design in cooking compartment distributes heat evenly, and is easy to keep clean. Creased top & bottom enhance drainage. Cold Water Condenser for each compartment maintains a dry steam. Fully insulated cooking compartment for thermal efficiency. Removable Stainless Steel Slide Racks.
- **Automatic Generator Drain:** Contains a "Water Jet" Spray Rinse Drain Cleaning Cycle to keep drain clear.
- **Exclusive Automatic Probe for Water Level Control:** Separate from the generator for easy access, contains a high velocity rinse cycle to eliminate mineral buildup.
- **Exclusive "Cool to the Touch" Two-Piece Compartment Door Design:** Free floating inner door with reversible gas-ket provides an air tight seal. Stainless Steel Slam/Latch Door Latch mechanism for reliability.
- **Condensate Drip Trough:** Provide under lower compartment door to collect condensate.
- **Left Hand Door Hinging:** Compartment Doors hinged on the left, controls on the right.
- **NSF Certified 6" Stainless Steel Legs** with adjustable flanged feet for a one inch level adjustment.



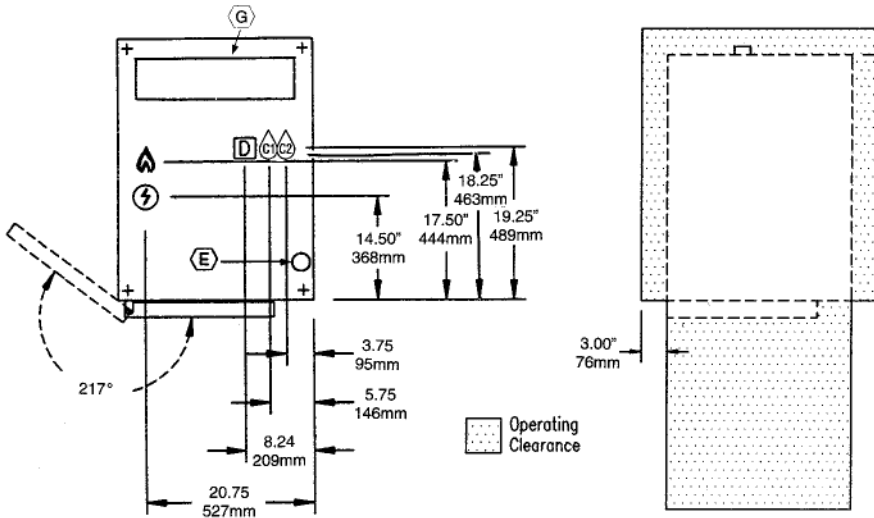
Shown with optional
Electronic Timer

Short Form Specifications

Shall be CLEVELAND, SteamCraft® Ultra 10, two compartments, Floor Model Steamer, Model 24-CGA-10, single, large capacity Gas-fired Atmospheric Steam Generator, 125M BTU input. Remote Probe Type Water Level Controls. Steam Generator with Automatic Water Fill on start up, Automatic Generator Blowdown, Electronic Spark Ignition and Generator Stand-by for instant steam. Choice of Compartment Controls, Manual By Pass Operation Mode, Exclusive Cold Water Condenser design, Type 430 Stainless Steel exterior and cooking compartments.

Options & Accessories

- Right hand Door Hinging, Controls on the Right (DHR)
- Electronic Timer with Compensating Load Feature (ETC)
- ON/OFF Steam Switch only for compartment controls (MC)
- 8" Stainless Steel Legs
- Dissolve® liquid descaling kit. USDA and FDA approved (10617413)
- Compartment Door Steam Shut Off Switch (SCS)
- Cafeteria Pans in depths of 1", 2½" and 4"
- Propane Gas option (PG)

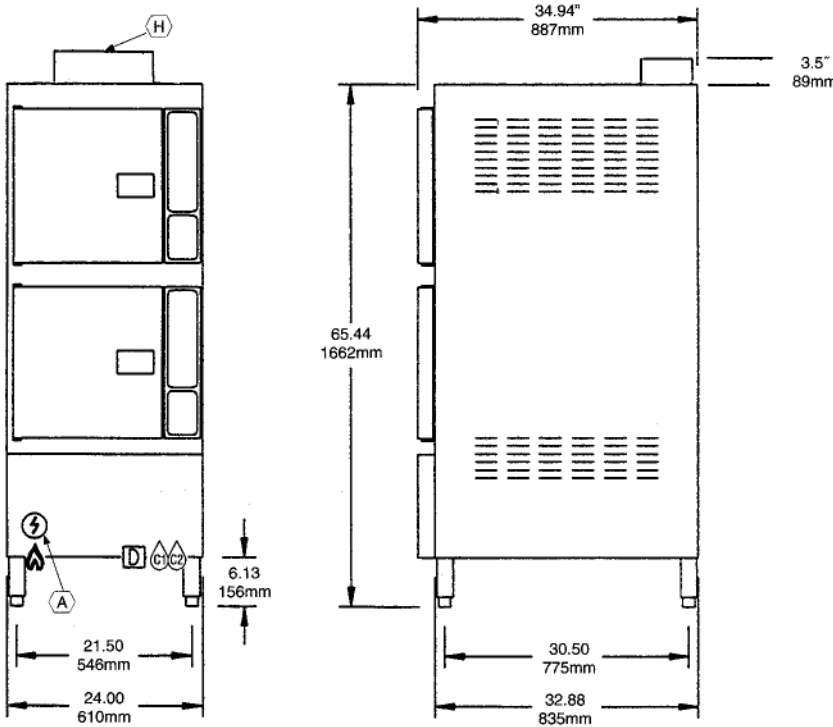


Each Compartment has capacity for:

- Five, 12" x 20" x 2½" deep Cafeteria Pans.

WATER QUALITY REQUIREMENTS

The quality of water varies greatly from region to region. Steam equipment generators must be drained daily and chemically descaled periodically to ensure proper operation. To minimize service problems caused by the accumulation of minerals and chemicals in water review the following quality guidelines with a local water treatment specialist. Inlet water that is beyond these specified guidelines should be treated to achieve these acceptable limits. Total Dissolved Solids less than 60 ppm, Alkalinity less than 20 ppm, Silica less than 13 ppm, pH factor greater than 7.5, Chlorine less than 30 ppm.



TOTAL CAPACITY (2 Compartments)	UTILITY CONNECTIONS		
10 — 12" x 20" x 2½" Cafeteria Pans or 20 — 12" x 20" x 1" Cafeteria Pans or 6 — 12" x 20" x 4" Cafeteria Pans	(A) Electrical Supply	(D) Drain: 1.50" Dia.	(G) Flue Gas Exhaust from Boiler
	(B) Cold Water Supply for Condenser 3/8" Dia. NPT	(E) Inlet for Generator Deliming Solution	(H) Flue Diverter (if required)
	(C) Cold Water Supply for Generator and Water Injection. 3/8" Dia. NPT (for water treatment conn.) Unit comes with a 50 Mesh Water Strainer (installation required)	(F) Gas Supply .75" Dia.	

GAS	ELECTRIC	COLD WATER	DRAINAGE	CLEARANCE						
75,000 BTU - 1 Compartment, 125,000 BTU - 2 Compartments	1 Fan & Controls, 1 Phase	35 psi minimum 60 psi maximum	1½" dia. Do not connect other units to this drain Drain must not be located beneath the steamer itself. Preferred floor drain location should be a minimum distance (from the unit) of at least 12" from the left side, 12" from the right side, 6" from the front and 6" from the rear Do not use PVC pipe	Right - 3", Left - 3", Rear - 3" (12" on control side if adjoining wall or equipment is over 30" high for service access) Contact factory for variances to clearances.						
SUPPLY PRESSURE <table border="1"> <thead> <tr> <th>NATURAL</th> <th>PROPANE</th> </tr> </thead> <tbody> <tr> <td>4.00" W.C. minimum</td> <td>12.00" W.C. minimum</td> </tr> <tr> <td>14.00" W.C. maximum</td> <td>14.00" W.C. maximum</td> </tr> </tbody> </table> Manufacturer must be notified if unit will be used above 2,000 ft. altitude.		NATURAL	PROPANE	4.00" W.C. minimum	12.00" W.C. minimum	14.00" W.C. maximum	14.00" W.C. maximum	Volts Watts Amps Wire 120 200 2.0 2 ** Do not connect to GFI outlet. See note below.	3/8" Dia. NPT for Generator (for water treatment connection) 3/8" Dia. NPT for Condenser	
NATURAL	PROPANE									
4.00" W.C. minimum	12.00" W.C. minimum									
14.00" W.C. maximum	14.00" W.C. maximum									

NOTES:
 **DO NOT CONNECT TO GFI OUTLET. CLEVELAND RANGE RECOMMENDS GAS FIRED 120 VOLT STEAMERS BE HARD WIRED DIRECTLY TO ELECTRICAL SYSTEM.
 Cleveland Range reserves right of design improvement or modification, as warranted.
 Many regional, state and local codes exist and it is the responsibility of the owner and installer to comply with the codes.
 Cleveland Range equipment is built to comply with applicable standards for manufacturers. Included among those approval agencies are UL/NSF#4 and CSA (AGA, CGA).